

actware LAB

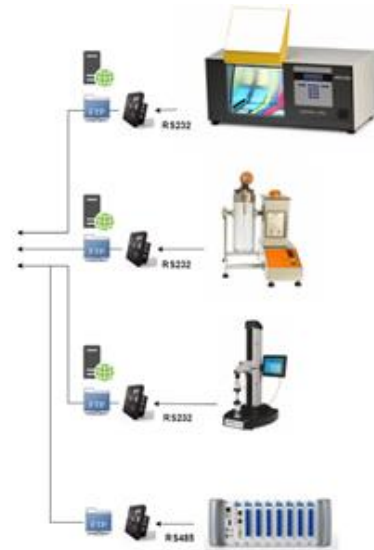
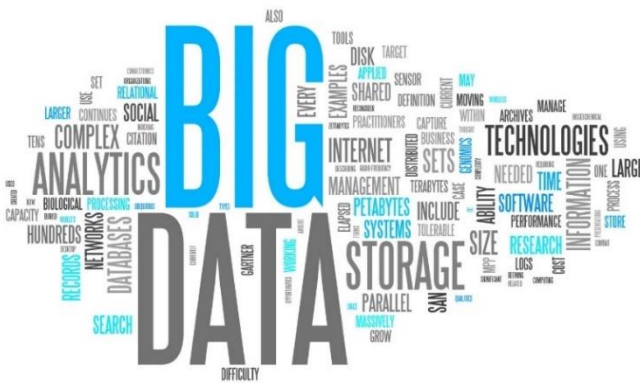
Laboratory Data Collector



Laboratory data collection software for universal instruments: serial devices (RS232), TCP/IP and file sharing.

The IDC stands for Instrument Data Collector and contains a small Linux-based CPU. It receives data from laboratory instruments which is analysed and stored into a database. A local webserver provides a user friendly web interface with reporting features.

Record, visualize and analyse lab measurements instantly.



Big data advantages:

- Central & redundant data storage (in client-server setup)
- Easily copy data to clipboard, CSV, Excel or PDF
- Automated transfer of equipment test results:
 - Human errors reduced
 - No duplications -> efficiency improvement
 - Real time data evaluation (pass/fail test results)
- File sharing
- Online machine status overview.
- Access from multiple locations including mobile devices (tablets, smart phones and TV-screens)
- SQL-format: ready for analytic software tools like Microsoft Power BI, Excel, Sharepoint
- Extra benefits:
 - Machine uptime/running registration
 - Historical data available from reporting tools
 - Add configurable fields for data association and specific analytics

RS232 Instruments:

Laboratory instruments equipped with a classic COM or USB port who sends out test results by use of the UART protocol.



TCP Instruments:

Laboratory instruments equipped with a network port (RJ45) where result data is transmitted or available by TCP/IP.



Instrument file sharing:

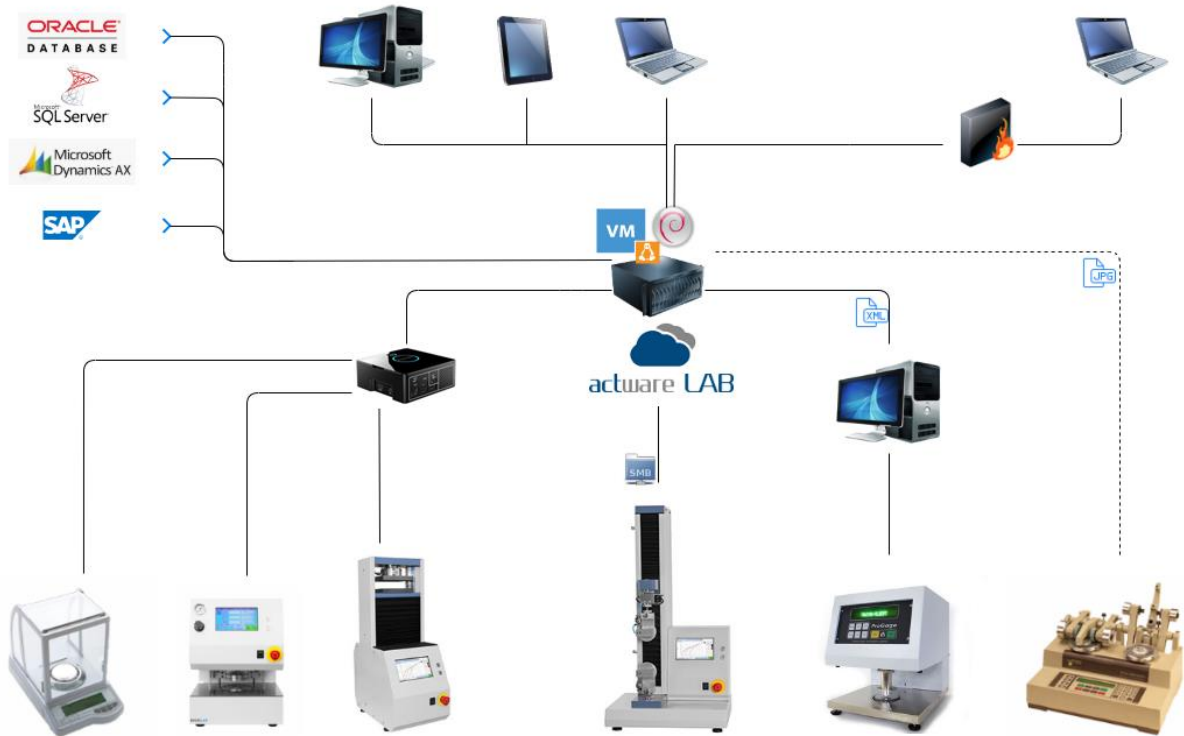
For laboratory instruments equipped with dedicated software where test results are stored on a local computer we use file sharing. We synchronize the content of the computer's log folder with the IDC's database.



Manual Instruments:

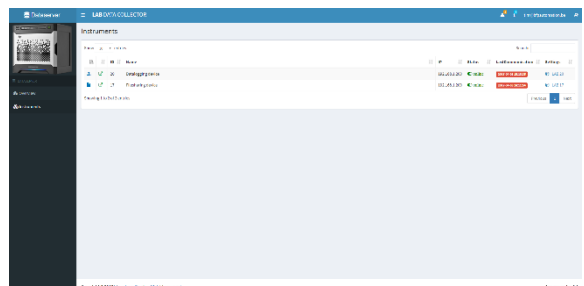
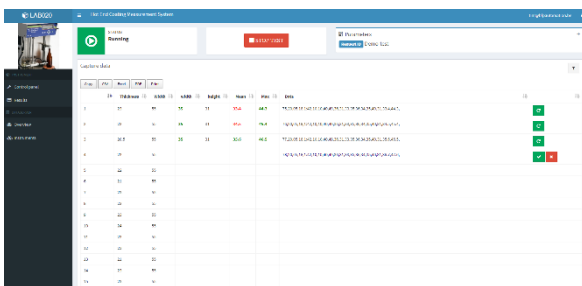
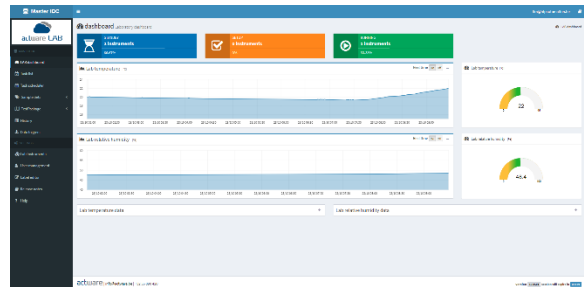
Laboratory instruments who are not equipped with a communication port. In this case the lab technician fills in the result and data validation will be executed instantly.

Network topology:

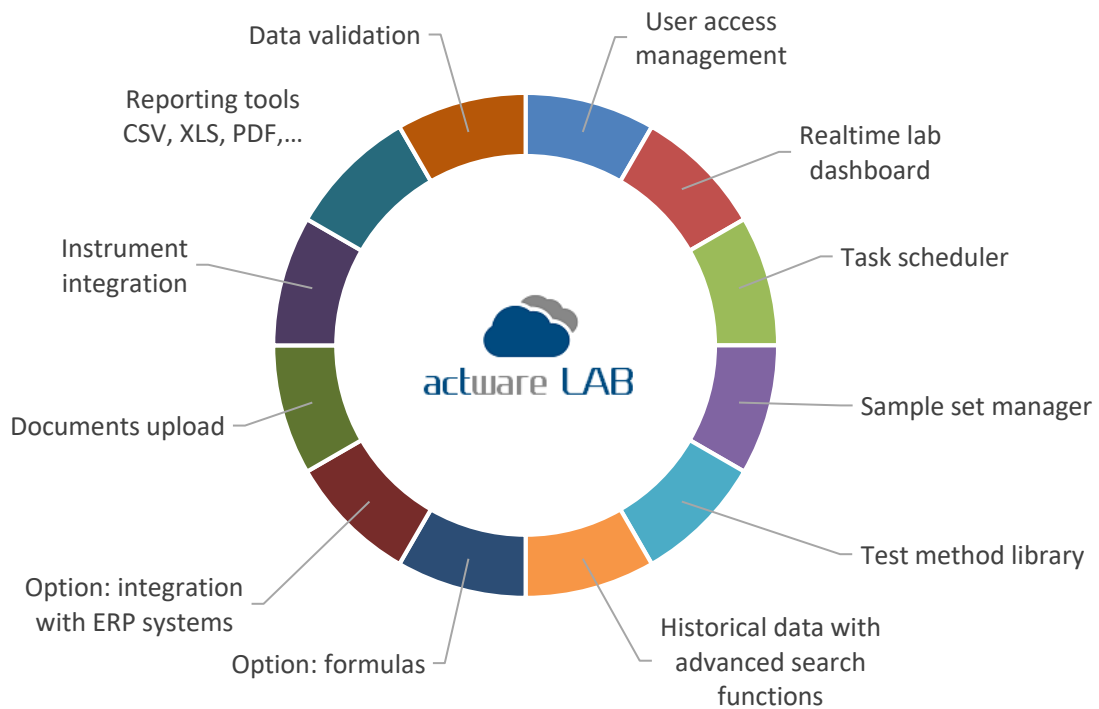


Web interface:

Actware LAB is completely web based, accessible with a standard web browser. No software installation is required on local computers or tablets.



Software features:



For more information, please contact Cloud automation on +32 (0) 55 890 420 or info@actware.be